



THE RIGHT SKILLS ► A PROVEN ADVANTAGE

Sample Questions for Welding Level “C” – ITA Web-Site

1. Which of the following must be considered if the welding location is a considerable distance from the welding machine?
 - A. reduce machine capacity
 - B. select a smaller electrode
 - C. check cable wire gauge size
 - D. use a larger grounding clamp

2. Which of the following has been known to cause retinal burning to workers as a result of exposure to the “welding arc”?
 - A. gamma rays
 - B. infra red radiation
 - C. using an “H” filter
 - D. high temperature exposure

3. Which eye protection should be worn to prevent arc flashes when walking around a welding shop?
 - A. a face shield
 - B. burning goggles
 - C. a welding helmet
 - D. flash goggles or safety glasses

4. Which type of shear will perform punching, cropping and notching?
 - A. bench
 - B. sheet metal
 - C. rotary throatless
 - D. universal or ironworker



THE RIGHT SKILLS ► A PROVEN ADVANTAGE

Sample Questions for Welding Level “C” – ITA Web-Site

5. Who would develop a Welding Quality Control Manual?
 - A. worksite welder
 - B. shop supervisor
 - C. company owner
 - D. production supervisor

6. Why should excess flux be removed when a brazed joint is completed?
 - A. can lead to corrosion
 - B. will reduce strength of joint
 - C. could start a fire or explosion
 - D. to avoid discolouration of base metal

7. What is the usual procedure when striking an arc and the electrode sticks to the base metal?
 - A. change polarity
 - B. tap the electrode hard
 - C. release electrode from holder
 - D. use chipping hammer to release

8. What does “EN” indicate in reference to welding current?
 - A. straight polarity
 - B. reverse polarity
 - C. engage negative
 - D. external negative

9. When using a weave pattern to cover a wide area in one pass (using SMAW), what is the maximum recommended width for the weave?
 - A. 4.5 mm
 - B. 1.5 times the diameter of the electrode
 - C. 2.5 times the diameter of the electrode
 - D. 4.5 times the diameter of the electrode



THE RIGHT SKILLS ► A PROVEN ADVANTAGE

Sample Questions for Welding Level “C” – ITA Web-Site

10. Which of the following will increase the potential and severity of electric shock to workers when using SMAW?
 - A. moisture
 - B. temperature
 - C. reverse polarity
 - D. wrong electrode

11. Which tool(s) should be used to remove slag?
 - A. small claw hammer
 - B. flat tip screw driver
 - C. wire brush and bastard file
 - D. chipping hammer and wire brush

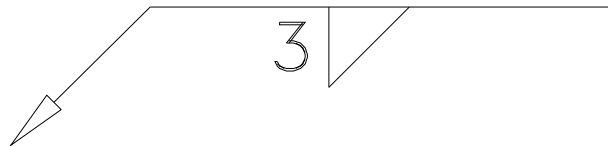
12. Which is the major advantage of plasma cutting as compared to oxy-fuel cutting?
 - A. the cost of the fuel
 - B. cuts thicker material
 - C. less noise for workers
 - D. minimizes the distortion

13. What will be affected by increasing the carbon content in steel?
 - A. ductility
 - B. hardness
 - C. weldability
 - D. malleability

14. What is a 1020 steel in the SAE and AISI classifications?
 - A. nickel steel
 - B. chromium steel
 - C. low carbon steel
 - D. nickel chromium-molybdenum steel

Sample Questions for Welding Level “C” – ITA Web-Site

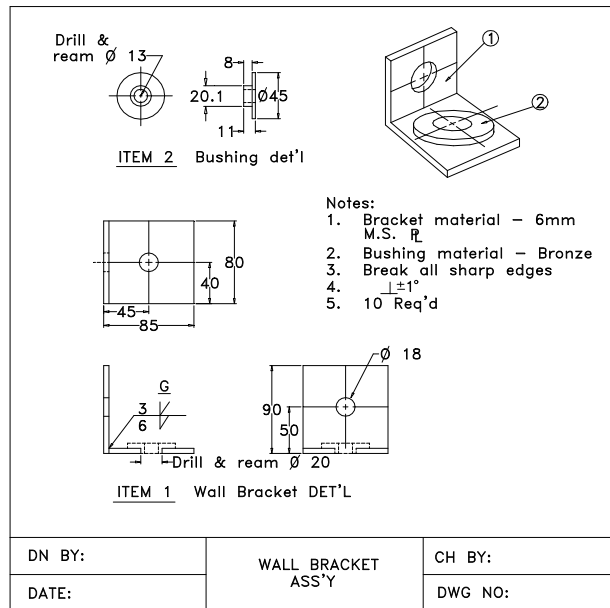
15. Which of the following properties refers to the ability of a metal to bend or twist without breaking or cracking?
- A. ductility
 - B. hardness
 - C. toughness
 - D. machinability
16. How can cold-rolled steel be identified?
- A. the presence of rust
 - B. the presence of mill scale
 - C. smoothness and round edges
 - D. smoothness and square edges
17. What is the meaning of the welding symbol shown below?



- A. 3 mm throat, fillet, other side
- B. 3 mm leg length, fillet weld, other side
- C. 3 mm leg length, fillet weld, arrow side
- D. 3 mm leg length, single bevel, arrow side

Sample Questions for Welding Level “C” – ITA Web-Site

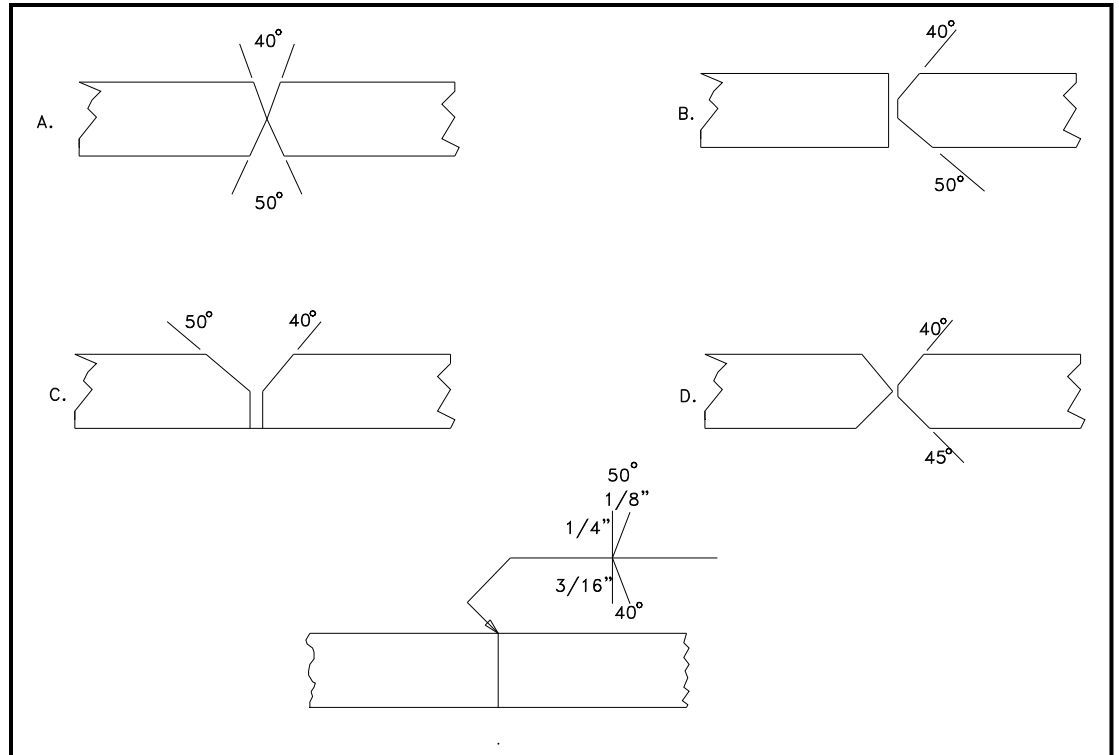
18. Which type of drawing is shown below?



- A. detail assembly
- B. orthographic plan
- C. oblique assembly
- D. exploded isometric assembly

Sample Questions for Welding Level “C” – ITA Web-Site

19. Which of the following diagrams shows the correct joint design for the welding symbol shown below?



- A. diagram A
- B. diagram B
- C. diagram C
- D. diagram D



THE RIGHT SKILLS ► A PROVEN ADVANTAGE

Sample Questions for Welding Level “C” – ITA Web-Site

20. If two angles in a given triangle are both 60 degrees, what is the third angle?
- A. 10 degrees
 - B. 30 degrees
 - C. 60 degrees
 - D. 90 degrees
21. When fabricating a rectangular support frame for a tank and one side is 6 m and the other side is 8 m, what would the diagonal measurement be in order to check for square accuracy?
- A. 8 m
 - B. 9 m
 - C. 10 m
 - D. 11 m